



Div's **RC** Pro

**PRODUCT
CATALOUGE**

**PROFESSIONAL
QUALITY POWER TOOLS
AND ACCESSORIES**

www.divspowertools.in

CHISEL POINTED

For SDS, 0810, 11E, PH 65, HILTI

Sizes
14X250
14x400
17X280
17X400
18X280
18X400
18X480

Sizes
18x600
22x400
22x500
22x600
30x410
30x480
30x600


CHISEL FLAT

Sizes
14x250x22
14x400x25
17x280x25
17x400x25
18x280x25
18x400x25

Sizes
18x480x25
18x600x25
30x410x35
30x480x35
30x600x35


CHISEL XTRA WIDE

Sizes
14x250x80 (Xtra Wide)
14x400x50 (Xtra Wide)
17x280x50 (Xtra Wide)
17x400x50 (Xtra Wide)
17x400x80 (Xtra Wide)

Sizes
18x280x50 (Xtra Wide)
18x400x50 (Xtra Wide)
18x400x80 (Xtra Wide)
18x600x80 (Xtra Wide)

SINGLE TIP HAMMER BITS
Size: 4mm to 38mm


SIZES	SIZES	SIZES	SIZES	SIZES
4x110	10x450	14x600	19x210	24x450
5x110	10x600	14x800	19x260	24x600
5x160	12x110	15x160	19x310	25x160
5.5x110	12x160	15x210	19x350	25x210
5.5x160	12x210	16x160	19x460	25x260
6x110	12x260	16x210	19x600	25x310
6x160	12x310	16x260	20x160	25x350
6x210	12x350	16x310	20x210	25x400
6x260	12x400	16x350	20x260	25x450
6x310	12x450	16x400	20x310	25x600
6.5x110	12x500	16x450	20x350	25x800
6.5x160	12x600	16x500	20x400	26x210
8x110	12x800	16x600	20x450	26x260
8x160	13x160	16x800	20x500	26x310
8x210	13x210	16x1000	20x600	26x460
8x260	13x310	18x160	20x800	26x600
8x310	13x450	18x210	22x160	28x310
8x350	14x110	18x260	22x210	28x460
8x460	14x160	18x310	22x260	30x310
10x110	14x210	18x350	22x310	30x460
10x160	14x260	18x400	22x350	32x310
10x210	14x310	18x450	22x400	32x450
10x260	14x350	18x500	22x450	35x310
10x310	14x400	18x600	22x600	35x450
10x350	14x450	18x800	24x260	38x310
10x400	14x500	19x160	24x310	38x450

Cross Tip Hammer Bits

Size: 5 mm to 32 mm



Sizes
5x110
5.5x110
6x110
6x160
6x210
6x260
6.5x110
6.5x160
7x110
7x160
8x110
8x160
8x210
8x260
8x310
10x160
10x210

Sizes
10x260
10x310
12x160
12x210
12x260
12x310
12x350
12x450
14x160
14x210
14x260
14x310
14x350
14x450
16x160
16x210
16x260

Sizes
16x310
16x350
16x450
18x160
18x210
18x260
18x310
18x350
18x450
20x160
20x260
20x310
20x350
20x450
25x210
25x260
25x310
25x350
25x450
28x450
30x450
32x450



Concrete Hole Saw

(with 300mm Arbor)

Sizes: 25MM, 30MM, 32MM, 40MM
50 MM, 65MM, 80MM



SDS Adaptor



Hinged Bit

Sizes: 35MM



**QUALITY POWER TOOLS
& ACCESSORIES**



ABRASIVES



www.divpowertools.in



[divpowertoolsprivatelimited](https://www.instagram.com/divpowertoolsprivatelimited)

CUTTING WHEEL (1 NETT, 2 NETT)

4"



AVAILABLE COLORS: ● ● ● ●

CUTTING WHEEL (1 NETT, 2 NETT)

5"



AVAILABLE COLORS: ● ● ● ●

CUTTING WHEEL (1 NETT, 2 NETT)

7"



AVAILABLE COLORS: ● ● ● ●

CUTTING WHEEL (1 NETT, 2 NETT)

12"



AVAILABLE COLORS: ● ● ● ●

CUTTING WHEEL (1 NETT, 2 NETT)

14"



AVAILABLE COLORS: ● ● ● ● ●

CUTTING WHEEL

4"



AVAILABLE COLORS: ● ● ● ●

CUTTING WHEEL

5"



AVAILABLE COLORS: ● ● ● ●

CUTTING WHEEL (2 IN 1) GREEN + RED



SIZES: 4" 5" 7" 14"

CUTTING WHEEL (4 COLOR IN 1 BOX)



AVAILABLE COLORS: ● ● ● ●

CUTTING WHEEL



AVAILABLE COLORS: ● ● ● ●

SIZES: 4" 5" 7" 14"

CUTTING WHEEL



SVD

SIZES: 4" 14"

CUTTING WHEEL



SUPER TOUGH

SIZES: 4" 14"

CUTTING WHEEL



D

SIZES: 4" 14"

DC WHEEL



SIZES: 4" 5" 7"

AVAILABLE COLORS: ● ● ● ●

DC WHEEL



SIZES: 4" 5" 7"

DC WHEEL



SIZES: 4" 5" 7"

AVAILABLE COLORS: ● ● ● ●

FLAP DISC



#36, #50, #60, #80, #100, #120

Sizes: 4"

FLAP DISC



#36, #60, #80, #100, #120

Sizes: 4"

FLAP DISC



#36, #60, #80, #100, #120

Sizes: 4"

FLAP DISC



#36, #60, #80, #100, #120

Sizes: 4"

VELCRO PAPER 5"



GRIT #36, #40, #60, #80, #100, #120

FIBER DISC 5"



GRIT #24, #36, #40, #50, #60, #80, #100, #120

GC WHEEL 4"



GRIT

#46, #50, #60,
#80, #100, #120,
#180, #220, #320

WA WHEEL



GRIT

#36, #46, #60,
#80, #100,
#120

GC WHEEL 4"



GRIT

#46, #50, #60,
#80, #100, #120,
#180, #220,
#320

STONE POLISHING DISC



(4" U-8)

GRIT	#120, #220,
	#320, #400,
	#600, #800,
	#1000

FELT WHEEL



4", 15mm



NON-WOVEN WHEEL

(U-5, 13mm, 16mm)



**SINGLE
PCS.
PACKING**





**QUALITY POWER TOOLS
& ACCESSORIES**

**TCTSAW &
MARBLE
BLADES**



www.divspowertools.in



[divspowertoolsprivatelimited](https://www.instagram.com/divspowertoolsprivatelimited)

TCT BLADES

4" to 14" (Thin-Kerf)



Sizes	Sizes	Sizes
4x30	8x60	12x80
4x40	10x40	12x100
5x30	10x60	12x120
5x40	10x80	14x60
6x40	10x100	14x80
7x40	10x120	14x80 Wood
7x60	12x40	14x100
8x40	12x60	14x120



TCT BLADES

SIZE 4X30 4X40 5X30 5X40



**THIN-KERF
FOR SMOOTH
CUTTING**



**4
COLOUR
IN 1 BOX**



TCT BLADES



4" to 14"

**FOR
SMOOTH
CUTTING**



Sizes
4x30
4x40
5x30
5x40
6x40

Sizes
7x40
7x60
8x40
8x60
10x40

Sizes
10x60
10x80
10x100
10x120
12x40

Sizes
12x60
12x80
12x100
12x120
14x60

Sizes
14x80
14x80 Wood
14x100
14x120

MARBLE BLADE

SEG, RIM & TURBO



4" to 24" For Marble & Granite

CERAMIC BLADE 4"



(U Slot) For Tile Cutting

HOT PRESSED 4"

SUPER THIN TURBO



(Zero Chipping) For Tile Cutting



DIAMOND CUP WHEEL 3" & 4"



SEG

TURBO

RIM



HOT PRESSED



108503

110x8mmx1.8x9T (For Granite)

HOT PRESSED



108504

110x12mmx9T (For Granite)

HOT PRESSED



108505

115x13x8T (For Granite wet Cutting)

HOT PRESSED (MONSTER)



108506

115x15mmx8T (For Concrete & Brick)

HOT PRESSED SUPER THIN TURBO



108507

105x10mmx1.2 (For Ceramics)

U-SLOT



108508

110x10x1.4 (for ceramic Wet cutting)

NAINO (LASER TYPE)



108509

105x1.4x1.0 (For Naino white)

ZERO CHIPPING SEG



108510

110x7.0x1.9x9T (For Hard Vitrified Tiles)

ZERO CHIPPING RIM



108511

110x6.0x1.9 (For Hard Vitrified Tiles)

ULTRATHIN RIM



108512

110x5.0x20mm (For Italian Marble)

HOT PRESSED



108513

110x2.0x10 (For Sandstone & Granite)

HOT PRESSED DRY CUTTING



108514

110x1.8x8T (For Granite & Marble)

HOT PRESSED



Div's^{RC} Pro

200x12x14T **8" Grooving**

CD BLADE



Div's^{RC} Pro

For Glass

HOT PRESSED

Div's^{RC} DN
INDUSTRIAL SERIES





QUALITY POWER TOOLS & ACCESSORIES



www.divspowertools.in



[divspowertoolsprivatelimited](https://www.instagram.com/divspowertoolsprivatelimited)

Electric DRILL

DPT 5001

Specification

Drill Capacity : 10 mm
 Voltage/Frequency : 220 V / 240 V 50 Hz
 Input Power : 450 W
 No Load Speed : 0-350/0-1300 RPM


Electric DRILL

DPT 5002

Specification

Drill Capacity : 10 mm
 Voltage/Frequency : 220 V / 240 V 50 Hz
 Input Power : 500 W
 No Load Speed : 0-350/0-1300 RPM


Electric DRILL

DPT 5004

Specification

Drill Capacity : 13 mm
 Voltage/Frequency : 220 V / 240 V 50 Hz
 Input Power : 650 W
 No Load Speed : 0-2900 RPM


Screw Driver

DPT 5005

Specification

Drill Capacity : 10 mm
 Voltage/Frequency : 220 V / 240 V 50 Hz
 Input Power : 450 W
 No Load Speed : 0-350/0-1300 RPM


Impact Drill

DPT 5007

Specification

Chuck Size : 13 mm
 Voltage/Frequency : 220 V / 240 V 50 Hz
 Rated Input Power : 850 W
 No Load Speed : 0-3000 RPM


Cordless Drill (12V)

DPT 5010


Specification

Drill Capacity : 10 mm
 Voltage/Frequency : 220 V / 240 V 50 Hz
 Input Power : 12 v
 No Load Speed : 0-350/0-1300 RPM


Cordless Drill (20V)

DPT 5011


Specification

Drill Capacity : 10 mm
 Voltage/Frequency : 220 V / 240 V 50 Hz
 Input Power : 20 v
 No Load Speed : 0-350/0-1300 RPM



Marble Cutter 4"

DPT 110R HY

Specification

Wheel Size : 110 mm
 Voltage/ : 220 V /
 Frequency : 240 V 50 Hz
 Input Power : 1450 W
 No Load Speed : 12500 RPM



Marble Cutter 4"

DPT 110C HY

Specification

Wheel Size : 110 mm
 Voltage/ : 220 V /
 Frequency : 240 V 50 Hz
 Input Power : 1450 W
 No Load Speed : 5000 RPM



Marble Cutter 5"

DPT 125 MC

Specification

Wheel Size : 125 mm
 Voltage/ : 220 V /
 Frequency : 240 V 50 Hz
 Input Power : 2000 W
 No Load Speed : 12500 RPM



Wood Cutter 5"

DPT 125 WC

Specification

Wheel Size : 125 mm
 Voltage/ : 220 V /
 Frequency : 240 V 50 Hz
 Input Power : 2000 W
 No Load Speed : 12500 RPM



Marble Cutter 7"

DPT MC180A

Specification

Wheel Size : 180 mm
 Voltage/ : 220 V /
 Frequency : 240 V 50 Hz
 Input Power : 2000 W
 No Load Speed : 5000 RPM



Angle Grinder 4"

DPT 6-100N



Specification

Disc Diameter : 100mm
 Voltage/ : 220 V /
 Frequency : 240 V 50 Hz
 Input Power : 1100 W
 No Load Speed : 11000 RPM

Angle Grinder 4"

DPT AG 100A



Specification

Disc Diameter : 100mm
 Voltage/ : 220 V /
 Frequency : 240 V 50 Hz
 Input Power : 1100 W
 No Load Speed : 11000 RPM

Angle Grinder 4"

DPT 801N HY



Specification

Disc Diameter : 100mm
 Voltage/ : 220 V /
 Frequency : 240 V 50 Hz
 Input Power : 1200 W
 No Load Speed : 11000 RPM

Angle Grinder 4"

DPT 100M



Specification

Disc Diameter : 100mm
 Voltage/ : 220 V /
 Frequency : 240 V 50 Hz
 Input Power : 1250 W
 No Load Speed : 11000 RPM

Angle Grinder 4"

DPT 100D



Specification

Disc Diameter : 100mm
 Voltage/ : 220 V /
 Frequency : 240 V 50 Hz
 Input Power : 1200 W
 No Load Speed : 11000 RPM

Angle Grinder 4"

DPT G10SS



Specification

Disc Diameter : 100mm
 Voltage/ : 220 V /
 Frequency : 240 V 50 Hz
 Input Power : 1200 W
 No Load Speed : 11000 RPM

Angle Grinder 5"

DPT 125AHY



Specification

Disc Diameter : 125mm
 Voltage/ : 220 V /
 Frequency : 240 V 50 Hz
 Input Power : 1400 W
 No Load Speed : 11000 RPM

Angle Grinder 5"

DPT 5043



Specification

Disc Diameter : 125mm
 Voltage/ : 220 V /
 Frequency : 240 V 50 Hz
 Input Power : 1400 W
 No Load Speed : 11000 RPM

Pressure Washer

DPT 5045

Specification

Voltage/ : 220 V /
 Frequency : 240 V 50 Hz
 Input Power : 2500 W
 Rate Pressure : 180 BAR
 Rate Flow : 540 L/H



Pressure Washer

DPT 5047

Specification

Voltage/ : 220 V /
 Frequency : 240 V 50 Hz
 Input Power : 2500 W
 Rate Pressure : 200 BAR
 Rate Flow : 880 L/H



Cutoff Machine (355LG)

DPT LG 355B HY

Specification

Disc Diameter : 355mm
 Voltage/ : 220 V /
 Frequency : 240 V 50 Hz
 Input Power : 2800 W
 No Load Speed : 2200 RPM



Cutoff Machine (7614NB)

DPT 7614NB

Specification

Disc Diameter : 355mm
 Voltage/ : 220 V /
 Frequency : 240 V 50 Hz
 Input Power : 3000 W
 No Load Speed : 2200 RPM



Cutoff Machine (CC-14)

DPT CC14 HY

Specification

Disc Diameter : 355mm
 Voltage/ : 220 V /
 Frequency : 240 V 50 Hz
 Input Power : 2800 W
 No Load Speed : 2200 RPM



Mitersaw 10"

DPT 5055

Specification

Disc Diameter : 255mm
 Voltage/ : 220 V /
 Frequency : 240 V 50 Hz
 Input Power : 2500 W
 No Load Speed : 6000 RPM



Mitersaw 12"

DPT 5057

Specification

Disc Diameter : 305 mm
 Voltage/ : 220 V /
 Frequency : 240 V 50 Hz
 Input Power : 3000 W
 No Load Speed : 5000 RPM



Rotary Hammer 20 mm
DPT 20H



Specification

Drill Capacity : 20 mm
Voltage/ : 220 V/
Frequency : 240 V50 Hz
Input Power : 1500 W
No Load Speed : 850 RPM



Rotary Hammer 22 mm
DPT 5062



Specification

Drill Capacity : 22 mm
Voltage/ : 220 V/
Frequency : 240 V / 50 Hz
Input Power : 2000 W
No Load Speed : 850 RPM



Rotary Hammer 26 mm
DPT 5063



Specification

Drill Capacity : 26 mm
Voltage/ : 220 V/
Frequency : 240 V50 Hz
Input Power : 2000 W
No Load Speed : 850 RPM



Rotary Hammer 26mm
DPT 5064



Specification

Drill Capacity : 26 mm
Voltage/ : 220 V/
Frequency : 240 V / 50 Hz
Input Power : 2000 W
No Load Speed : 850 RPM



Rotary Hammer 26mm
DPT 5065



Specification

Drill Capacity : 26 mm
Voltage/ : 220 V/
Frequency : 240 V50 Hz
Input Power : 2000 W
No Load Speed : 850 RPM



Rotary Hammer
DPT 3-26 NEW



Specification

Drill Capacity : 26 mm
Voltage/ : 220 V/240
Frequency : V50 Hz
Input Power : 2000 W
No Load Speed : 0-900 RPM



Rotary Hammer
DPT 3-26 HY



Specification

Drill Capacity : 26 mm
Voltage/ : 220 V/
Frequency : 240 V50 Hz
Input Power : 2000 W
No Load Speed : 850 RPM



Demolition Hammer

DPT DH0810B

Specification

CHISEL : 17MM
 Input Power : 900 W
 Vibration : 2900/Min
 (Chiselling)



5KG

Demolition Hammer

DPT DH860 HY

Specification

CHISEL : 17MM
 Input Power : 1250 W
 Vibration (Chiselling) : 2900/Min



5KG

Demolition Hammer

DPT 0835 HY

Specification

CHISEL : 17MM
 Input Power : 2000 W
 Vibration (Chiselling) : 3800/Min



7KG

Demolition Hammer

DPT DH 7000

Specification

CHISEL : 17MM
 Input Power : 2000 W
 Vibration (Chiselling) : 3800/Min



7KG

Demolition Hammer

DPT DH 8000 MAX

Specification

CHISEL : 18MM
 Input Power : 2200 W
 Vibration (Chiselling) : 2900/Min



7KG

Demolition Hammer

DPT 11 ED

Specification

CHISEL : 18MM
 Input Power : 1500 W
 Vibration (Chiselling) : 18.5 M/s²



11KG

Demolition Hammer

DPT DH 11A

Specification

CHISEL : 18MM
 Input Power : 1500 W
 Vibration (Chiselling) : 18.5 M/s²



11KG

Demolition Hammer

DPT DH 12000 MAX

Specification

CHISEL : 18MM
 Input Power : 2500 W
 Vibration (Chiselling) : 2900/Min



12KG

Demolition Hammer

DPT 65H

Specification

CHISEL : 30MM
 Input Power : 2200 W
 Full Load Impact Rate : 1400/min



16KG

Demolition Hammer

DPT DH 24000

Specification

CHISEL : 30MM
 Input Power : 2500 W
 Vibration (Chiselling) : 18.5 M/s²



SHOCKER TYPE

21KG

16" Electric Chain Saw

DPT 5016 N HY

Specification

Skid Length : 405 mm
 Input Power : 2000 W
 Output Power : 2.4 Kw



22" Electric Chain Saw

DPT ECS 22"

Specification

Skid Length : 550 mm
 Input Power : 2000 Watt
 Output Power : 2.4 Kw



22" Gasoline Chain Saw

(62 CC) METAL STARTER
 DPT MC 600

Specification

Skid Length : 550 mm
 Two Stroke
 Displacement : 62 cc
 Output Power : 2.4 Kw



22" Gasoline Chain Saw

(62 CC) METAL STARTER
 DPT 5095

Specification

Skid Length : 550 mm
 Two Stroke
 Displacement : 62 cc
 Output Power : 2.4 Kw



Electric Planner

DPT 82EP

Specification

Planning Width : 82mm
 Voltage/ : 220 V/
 Frequency : 240 V 50 Hz
 Max Torque : 850 W
 No Load Speed : 16000 RPM



Electric Planner

DPT 1900B HY

Specification

Planning Width : 82mm
 Voltage/ : 220 V/
 Frequency : 240 V 50 Hz
 Input Power : 800 W
 No Load Speed : 16000 RPM



Jigsaw 65mm

DPT 65J



Specification

Voltage/
 Frequency : 230 V / 50 Hz
 Input Power : 1000 W
 No Load Speed : 500-3300 RPM



Jigsaw 70mm

DPT 70J



Specification

Voltage/
 Frequency : 230 V / 50 Hz
 Input Power : 700 W
 No Load Speed : 500-3300 RPM



Jigsaw 85mm

DPT 85BH



Specification

Voltage/Frequency : 230 V / 50 Hz
 Input Power : 1500 W
 No Load Speed : 500-3300 RPM



Jigsaw 85mm

DPT 85J



Specification

Voltage/ : 230 V /
 Frequency : 50 Hz
 Input Power : 1500 W
 No Load Speed : 500-3300 RPM



Concrete Vibrator 50mm
DPT 50 VIB



Specification

Voltage / : 220 V / 240 V
Frequency : 50 Hz
Input Power : 2000 W
No Load Speed : 2000 RPM

Concrete Vibrator 50mm
(METAL) DPT 5122



Specification

Voltage / : 220 V /
Frequency : 240 V / 50 Hz
Input Power : 2000 W
No Load Speed : 2000 RPM

Concrete Vibrator (50mm)
DPT 5124



Specification

Voltage / : 220 V /
Frequency : 240 V /
50 Hz
Input Power : 2200 W
No Load Speed : 2000 RPM

Concrete Vibrator
DPT 200 VIB



Specification

Voltage / : 220 V /
Frequency : 240 V / 50 Hz
Input Power : 2480 W
No Load Speed : 2000 RPM

circular saw
DPT 180 C



Specification

Disc Diameter : 180 mm
Voltage/ : 220 V /
Frequency : 240 V / 50 Hz
Input Power : 2400 W
No Load Speed : 5000 RPM

Electric Router 12 mm
DPT 12R



Specification

Chuck Diameter : 12mm
Voltage/Frequency : 220 V /
240 V / 50 Hz
Input Power : 2200 W
No Load Speed : 22000 RPM

Electric Router 12mm
DPT 12 SS



Specification

Chuck Diameter: 12mm
Voltage/ : 220 V /
Frequency : 240 V / 50 Hz
Input Power : 2800 W
No Load Speed : 28000 RPM



Air Compressor 30 L
FULL COPPER MOTOR

OIL FREE



Air Compressor 50 L
FULL COPPER MOTOR

OIL FREE



Wall Chaser
DPT5136

Specification

Voltage / : 220 V /
Frequency : 240 V/50 Hz
Input Power : 3500 W
No Load Speed : 5000 RPM



7 BLADES

Brush Cutter
2 STROKE/ 4 STROKE
DPT BC

Specification

Impact Rate 900-1890 BPM
Input Power 1500 W
Vibration
(Chiselling) 18.5 M/s²



Magnetic Drill
DPT MD50

WITH ACCESSORIES

Specification

Voltage/Frequency 220 V /
50 Hz
Input Power 2000 W
No Load Speed 780 RPM
Max Diameter 50 mm
Max Attraction 16200N



Air Compressor 50 LTR
FULL COPPER MOTOR

OIL FREE



Angle Grinder 4"



Specification

Disc Diameter : 100mm
Voltage/ : 220 V /
Frequency : 240 V 50 Hz
Input Power : 1400 W
No Load Speed : 11000 RPM

Angle Grinder 4"

DG-101

Specification

Disc Diameter : 100mm
 Voltage/ : 220 V /
 Frequency : 240 V 50 Hz
 Input Power : 1100 W
 No Load Speed : 11000 RPM



Angle Grinder 4"

DG-103

Specification

Disc Diameter : 100mm
 Voltage/ : 220 V /
 Frequency : 240 V 50 Hz
 Input Power : 1100 W
 No Load Speed : 11000 RPM



Angle Grinder 5"

DG-105

Specification

Disc Diameter : 125mm
 Voltage/ : 220 V /
 Frequency : 240 V 50 Hz
 Input Power : 1100 W
 No Load Speed : 11000 RPM



Die Grinder

DG-107

Specification

Disc Diameter : 100mm
 Voltage/ : 220 V /
 Frequency : 240 V 50 Hz
 Input Power : 1000 W
 No Load Speed : 11000 RPM



Polisher

DG-110

Specification

Disc Diameter : 180mm
 Voltage/ : 220 V /
 Frequency : 240 V 50 Hz
 Input Power : 1500 W
 No Load Speed : 11000 RPM



Straight Grinder

DG-109

Specification

Disc Diameter : 125mm
 Voltage/ : 220 V /
 Frequency : 240 V 50 Hz
 Input Power : 1500 W
 No Load Speed : 11000 RPM



Marble Cutter 4"

DG 110 SA

Specification

Wheel Size : 110 mm
 Voltage/ : 220 V /
 Frequency 240 V 50
 Hz
 Input Power : 1450 W
 No Load Speed : 12500 RPM



Marble Cutter 4"

DG 113

Specification

Wheel Size : 110 mm
 Voltage/ : 220 V /
 Frequency 240 V 50
 Hz
 Input Power : 1450 W
 No Load Speed : 5000 RPM



Marble Cutter 4"

DG 110 SB

Specification

Wheel Size : 110 mm
 Voltage/ : 220 V /
 Frequency 240 V 50 Hz
 Input Power : 1450 W
 No Load Speed : 12500 RPM



Marble Cutter 4"

DG 115



Specification

Wheel Size : 110 mm
 Voltage/ : 220 V /
 Frequency 240 V 50 Hz
 Input Power : 1450 W
 No Load Speed : 5000 RPM



Marble Cutter 5"

DG 116

Specification

Wheel Size : 125 mm
 Voltage/ : 220 V /
 Frequency 240 V 50 Hz
 Input Power : 1450 W
 No Load Speed : 12500 RPM



Marble Cutter 6"

DG 117

Specification

Wheel Size : 150 mm
 Voltage/ : 220 V /
 Frequency 240 V 50 Hz
 Input Power : 1750 W
 No Load Speed : 5000 RPM



circular saw 7"

DG 120

Specification

Wheel Size : 180 mm
 Voltage/ : 220 V /
 Frequency 240 V 50 Hz
 Input Power : 1750 W
 No Load Speed : 12500 RPM



Demolition Hammer (0810)

DG 121

5KG



Specification

CHISEL : 17MM
 Input Power : 1500 W
 Vibration (Chiselling) : 2900/Min

Demolition Hammer (0830)

DG 123

BOLT TYPE

5KG



Specification

CHISEL : 17MM
 Input Power : 1500 W
 Vibration (Chiselling) : 2900/Min

Demolition Hammer

DG-0835

7KG



Specification

CHISEL : 17MM
 Input Power : 2000 W
 Vibration (Chiselling) : 3800/Min

Demolition Hammer (0840)

DG 123

7KG



Specification

CHISEL : 17MM
 Input Power : 2000 W
 Vibration (Chiselling) : 2900/Min

Demolition Hammer

DG 128

11KG



Specification

CHISEL : 18MM
 Input Power : 2000 W
 Vibration (Chiselling) : 18.5 M/s²

Vacuum Cleaner 25 L

DG 25 VC



Specification

Capacity : 25 L
 Input Power : 1500 w
 Voltage/ : 220 V /
 Frequency : 240 V / 50 Hz

Vacuum Cleaner 35L

DG 35 VC



Specification

Capacity : 35 L
 Input Power : 1500 w
 Voltage/ : 220 V /
 Frequency : 240 V / 50 Hz

Cordless Drill (12V)

DG 132

Specification

Drill Capacity : 10 mm
 Voltage/ : 220 V /
 Frequency : 240 V 50 Hz
 Input Power : 12 v
 No Load Speed : 0-350/0-1300 RPM


Electric Drill

DG 13 IM

Specification

Drill Capacity : 13 mm
 Voltage/ : 220 V /
 Frequency : 240 V 50 Hz
 Input Power : 1000 W
 No Load Speed : 3000 RPM


Screw Driver

DG 134

Specification

Drill Capacity : 10 mm
 Input Power : 400 w
 Voltage/ : 220 V /
 Frequency : 240 V / 50 Hz


Tool Kit

DG 13 IM

Specification

Drill Capacity : 13 mm
 Voltage/ : 220 V /
 Frequency : 240 V 50 Hz
 Input Power : 600 W
 No Load Speed : 3000 RPM


Tool Kit

DG 13 RE

Specification

Drill Capacity : 13 mm
 Voltage/ : 220 V /
 Frequency : 240 V 50 Hz
 Input Power : 750 W
 No Load Speed : 3000 RPM


Electric Mixer

DG 138

Specification

Voltage/ : 220 V /
 Frequency : 240 V 50 Hz
 Input Power : 2000 W
 No Load Speed : 1000 RPM


Concrete Vibrator (50mm)

DG 139

Specification

Voltage / : 220 V /
 Frequency : 240 V/ 50 Hz
 Input Power : 2000 W
 No Load Speed : 2000 RPM


Concrete Vibrator

DG 140

Specification

Voltage / : 220 V /
 Frequency : 240 V/50 Hz
 Input Power : 2480 W
 No Load Speed : 2000 RPM



Mitersaw 10" (1040)

DG 141

Specification

Disc Diameter : 255mm
 Voltage/ : 220 V /
 Frequency : 240 V 50 Hz
 Input Power : 2500 W
 No Load Speed : 6000 RPM



Mitersaw 10"

DG 142

Specification

Disc Diameter : 255mm
 Voltage/ : 220 V /
 Frequency : 240 V 50 Hz
 Input Power : 2500 W
 No Load Speed : 6000 RPM



Cutoff Machine (355LG)

DG 143

Specification

Disc Diameter : 355mm
 Voltage/ : 220 V /
 Frequency : 240 V 50 Hz
 Input Power : 2800 W
 No Load Speed : 2200 RPM



16" Electric Chain Saw (5016)

DG 144

Specification

Skid Length : 405 mm
 Input Power : 2000 W
 Output Power : 2.4 Kw



22" Gasoline Chain Saw

(62 CC) METAL STARTER

DG 6200

Specification

Skid Length : 550 mm
 Two Stroke
 Displacement : 62 cc
 Output Power : 2.4 Kw



22" Gasoline Chain Saw

(58 CC) METAL STARTER

DG 5800

Specification

Skid Length : 550 mm
 Two Stroke
 Displacement : 58 cc
 Output Power : 2.4 Kw



Rotary Hammer

DG151

Specification

Drill Capacity 20 mm
 Voltage/Frequency 220 V /
 240 V 50 Hz
 Input Power 1500 W
 No Load Speed 850 RPM



Rotary Hammer

DG152

Specification

Drill Capacity : 26 mm
 Voltage/ : 220 V/
 Frequency 240 V 50 Hz
 Input Power : 2000 W
 No Load Speed : 850 RPM



Electric Router 12mm

DG155

Specification

Chuck Diameter: 12mm
 Voltage/ : 220 V /
 Frequency 240 V / 50 Hz
 Input Power : 2000 W
 No Load Speed : 22000 RPM



Electric Router 12mm

DG157

Specification

Chuck Diameter: 12mm
 Voltage/ : 220 V /
 Frequency 240 V / 50 Hz
 Input Power : 2000 W
 No Load Speed : 28000 RPM



Jigsaw 70mm

DG161

Specification

Voltage/ : 230 V / 50 Hz
 Frequency
 Input Power : 700 W
 No Load Speed : 500-3300 RPM



Electric Blower

DG165

Specification

Voltage/ : 230 V / 50 Hz
 Frequency
 Input Power : 700 W
 No Load Speed : 500-3300 RPM



Electric Planner 1900B

DG166

Specification

Planning Width : 82mm
 Voltage/ : 220 V/
 Frequency 240 V 50 Hz
 Max Torque : 750 W
 No Load Speed : 16000 RPM



Electric Planner 1900B Heavy

DG167

Specification

Planning Width : 82mm
 Voltage/ : 220 V/
 Frequency 240 V 50 Hz
 Input Power : 1000 W
 No Load Speed : 16000 RPM



Electric Planner 82 mm

DG169

Specification

Planning Width : 82mm
 Voltage/ : 220 V/
 Frequency 240 V 50 Hz
 Max Torque : 1000 W
 No Load Speed : 16000 RPM



Electric Planner 90 mm

DG170

Specification

Planning Width : 90mm
 Voltage/ : 220 V/
 Frequency 240 V 50 Hz
 Input Power : 1250 W
 No Load Speed : 16000 RPM



Cordless Drill (12V)
ST 2001



Specification

Drill Capacity 10 mm
Voltage/Frequency 220 V / 240 V 50 Hz
Input Power 12 v
No Load Speed 0-350/0-1300 RPM

SCREW DRIVER
ST 2006



Specification

Drill Capacity 10 mm
Input Power : 400 w
Voltage/ : 220 V / 240 V / 50 Hz
Frequency

Impact Drill
ST 2008



Specification

Chuck Size 13 mm
RVoltage/ 220 V / 240 V
Frequency 50 Hz
Rated Input Power 850 W
No Load Speed 0-3000 RPM

Du-10
ST 2010



Specification

Chuck Size 13 mm
RVoltage/ 220 V / 240 V
Frequency 50 Hz
Rated Input Power 700 W
No Load Speed 0-3000 RPM

Electric Mixer
ST 2023



Specification

Chuck Size 13 mm
RVoltage/ 220 V / 240 V
Frequency 50 Hz
Rated Input Power 850 W
No Load Speed 0-3000 RPM

Marble Cutter 4"
ST 2033



Specification

Wheel Size : 110 mm
Voltage/ : 220 V /
Frequency 240 V 50 Hz
Input Power : 1450 W
No Load Speed : 12500 RPM

Marble Cutter 4"
ST 2035



Specification

Wheel Size : 110 mm
Voltage/ : 220 V /
Frequency 240 V 50 Hz
Input Power : 1450 W
No Load Speed : 12500 RPM

Electric DRILL
ST 2004



Specification

Drill Capacity : 10 mm
Voltage/Frequency : 220 V / 240 V 50 Hz
Input Power : 450 W
No Load Speed : 0-350/0-1300 RPM

Angle Grinder 4"
ST 2013



Specification

Disc Diameter : 100mm
Voltage/ : 220 V /
Frequency 240 V 50 Hz
Input Power : 1100 W
No Load Speed : 11000 RPM

Angle Grinder 4"
ST 2015



Specification

Disc Diameter : 100mm
Voltage/ : 220 V /
Frequency 240 V 50 Hz
Input Power : 1100 W
No Load Speed : 11000 RPM

Electric Blower
ST 2031



Specification

Voltage/ : 230 V / 50 Hz
Frequency
Input Power : 1000 W
No Load Speed : 500-3300 RPM



Electric Trimmer
ST 2049



Specification

Capacity : 6mm
Voltage/ : 230 V / 50 Hz
Frequency
Input Power : 800 W
No Load Speed : 5000 RPM

Rotary Hammer
ST 2053



Specification

Drill Capacity : 20 mm
Voltage/ : 220 V/240
Frequency V50 Hz
Input Power : 1500 W
No Load Speed : 0-900 RPM

Rotary Hammer
ST 2055



Specification

Drill Capacity : 26 mm
Voltage/ : 220 V/
Frequency 240 V50 Hz
Input Power : 2000 W
No Load Speed : 850 RPM

22" Gasoline Chain Saw
(62 CC) METAL STARTER
ST 2051



Specification

Skid Length : 550 mm
Two Stroke
Displacement : 62 cc
Output Power : 2.4 Kw

18" Gasoline Chain Saw
(58 CC) METAL STARTER
ST 2052



Specification

Skid Length : 550 mm
Two Stroke
Displacement : 58 cc
Output Power : 2.4 Kw

Demolition Hammer

ST 2059



Specification

CHISEL : 30MM
 Input Power : 2200 W
 Full Load Impact Rate : 1400/min

Concrete Vibrator

ST 2063



Specification

Voltage / : 220 V / 240 V
 Frequency : 50 Hz
 Input Power : 1000 W
 No Load Speed : 2000 RPM

Cutoff Machine (355LT)

ST 2065

Specification

Disc Diameter : 355mm
 Voltage/ : 220 V /
 Frequency : 240 V 50 Hz
 Input Power : 2200 W
 No Load Speed : 2200 RPM



Compressor 30 Ltr & 50 Ltr



Jigsaw 55mm

RR 55J



Specification

Voltage/ Frequency : 230 V / 50 Hz
 Input Power : 400 W
 No Load Speed : 500-3300 RPM

Electric DRILL

SV 2310



Specification

Drill Capacity : 10 mm
 Voltage/Frequency : 220 V / 240 V 50 Hz
 Input Power : 450 W
 No Load Speed : 0-350/0-1300 RPM

Electric DRILL

SV 10 L/R



Specification

Drill Capacity : 10 mm
 Voltage/Frequency : 220 V / 240 V 50 Hz
 Input Power : 450 W
 No Load Speed : 0-350/0-1300 RPM

Screw Driver

SV 10S



Specification

Drill Capacity : 10 mm
 Voltage/Frequency : 220 V / 240 V 50 Hz
 Input Power : 450 W
 No Load Speed : 0-350/0-1300 RPM

Impact DRILL

SV 13 IM



Specification

Drill Capacity : 10 mm
 Voltage/Frequency : 220 V / 240 V 50 Hz
 Input Power : 750 W
 No Load Speed : 0-350/0-1300 RPM

Angle Grinder 4"

SV 6-100



Specification

Disc Diameter : 100mm
 Voltage/ : 220 V /
 Frequency : 240 V 50 Hz
 Input Power : 850 W
 No Load Speed : 11000 RPM

Angle Grinder 4"

SV 801



Specification

Disc Diameter : 100mm
 Voltage/ : 220 V /
 Frequency : 240 V 50 Hz
 Input Power : 1100 W
 No Load Speed : 11000 RPM

Marble Cutter 4"

SV 4SA



Specification

Wheel Size : 110 mm
 Voltage/ : 220 V /
 Frequency : 240 V 50 Hz
 Input Power : 1450 W
 No Load Speed : 12500 RPM

Marble Cutter 4"

SV 4SB



Specification

Wheel Size : 110 mm
 Voltage/ : 220 V /
 Frequency : 240 V 50 Hz
 Input Power : 1450 W
 No Load Speed : 12500 RPM

Demolition Hammer

SV 0810

5KG



Specification

CHISEL : 17MM
 Input Power : 1200 W
 Vibration : 2900/Min
 (Chiselling)

Demolition Hammer

SV 0830 B

5KG



Specification

CHISEL : 17MM
 Input Power : 1250 W
 Vibration (Chiselling) : 2900/Min

Demolition Hammer

SV 0835

7KG



Specification

CHISEL : 17MM
 Input Power : 2000 W
 Vibration (Chiselling) : 3800/Min

Demolition Hammer

SV 65A

16KG



Specification

CHISEL : 30MM
 Input Power : 2000 W
 Full Load Impact Rate : 1400/min

Rotary Hammer

SV 20H

Specification

Drill Capacity : 20 mm
 Voltage/ : 220 V/240
 Frequency : 50 Hz
 Input Power : 1500 W
 No Load Speed : 0-900 RPM



Rotary Hammer

SV 26H

Specification

Drill Capacity : 26 mm
 Voltage/ : 220 V/
 Frequency : 240/
 50 Hz
 Input Power : 2000 W
 No Load Speed : 850 RPM



16" Electric Chain Saw

SV 4016



Specification

Skid Length : 405 mm
 Input Power : 1800 W
 Output Power : 2.4 Kw

Electric Planner

SV 2510

Specification

Planning Width : 82mm
 Voltage/ : 220 V/
 Frequency : 240 V 50 Hz
 Max Torque : 850 W
 No Load Speed : 16000 RPM



Cutoff Machine (355LT)

SV 355C



Specification

Disc Diameter : 355mm
 Voltage/ : 220 V /
 Frequency : 240 V 50 Hz
 Input Power : 2200 W
 No Load Speed : 2200 RPM

Demolition Hammer

EP 65A



16KG



Specification

CHISEL : 30MM
 Input Power : 2000 W
 Full Load Impact Rate : 1400/min

Rotary Hammer

EP 133



Specification

Drill Capacity : 20 mm
 Voltage/ : 220 V/240
 Frequency : V50 Hz
 Input Power : 1500 W
 No Load Speed : 0-900 RPM



Rotary Hammer

EP 135



Specification

Drill Capacity : 26 mm
 Voltage/ : 220 V/
 Frequency : 240 V50 Hz
 Input Power : 2000 W
 No Load Speed : 850 RPM



Rotary Hammer

D 20H



Specification

Drill Capacity : 20 mm
 Voltage/ : 220 V/240
 Frequency : V50 Hz
 Input Power : 1500 W
 No Load Speed : 0-900 RPM



Rotary Hammer

D 26H



Specification

Drill Capacity : 26 mm
 Voltage/ : 220 V/
 Frequency : 240 V50 Hz
 Input Power : 2000 W
 No Load Speed : 850 RPM





**QUALITY POWER TOOLS
& ACCESSORIES**



**SPARES &
ACCESSORIES**



www.divspowertools.in



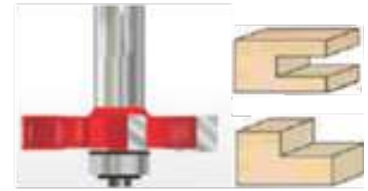
[divspowertoolsprivatelimited](https://www.instagram.com/divspowertoolsprivatelimited)

Corner Bits

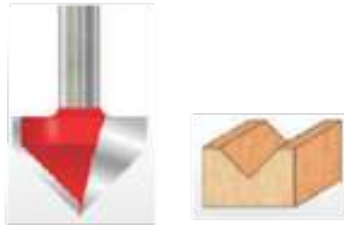
Size	Wood Size
135	15x10
140	22x10
141	22x12
145	25x15
152	35x15


**Rebeting Bits
(FOUR SIDE)**

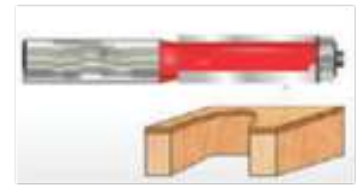
Size	Thick (mm)
126	6
128	10
121	35


Slotting Cutter
V-TYPE

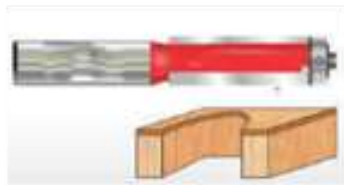
Size	Shank (mm)
934	8


Flush Trim Bits
WITH BEARING

Size	Dia (mm)
5001	4
5002	6
5003	8
5004	10


Flush Trim Bits
WITH BEARING LONG (50MM)

Size	Dia (mm)
5002	4
5003	6
5004	8


Ovolo Bits
(BEADING BITS)

Size	Dia (mm)	Size	Dia (mm)
9031	21	9035	37
9032	25	9036	43
9033	29	9037	53
9034	33	9038	63


Cove Bead Bits

Size	Dia (mm)	Size	Dia (mm)
9041	25	9045	43
9042	29	9046	53
9043	33	9047	63
9044	37	9048	73


Cove Bead Bits

Size	Dia (mm)
9051	29
9052	37
9053	33
9054	38


Cove-Ovolo
PROFILE BITS

Size	Dia (mm)
9061	29
9062	37
9063	33
9064	38


Ogee Fillet Bits

Size	Dia (mm)
9071	29
9072	37
9073	33



Roman Ogee Bits

Size	Dia (mm)
9081	29
9082	37
9083	33
9084	38


**Rebbiting
(SLOT BITS)**

Size	Dia (mm)	Size	Dia (mm)
9091	35	9097	35
9092	35	9098	35
9093	35	9099	35
9094	35	9100	35
9095	35	9200	35
9096	35		


**Core Box
ROUND BITS**

Size	Dia (mm)	Size	Dia (mm)
9101	6	9105	14
9102	8	9106	16
9103	10	9107	18
9104	12	9108	20


Step & Round Bits

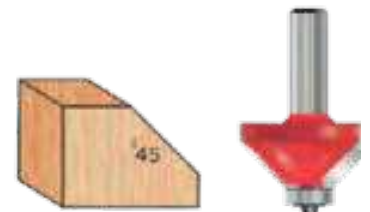
Size	Dia (mm)	Size	Dia (mm)
9201	10	9206	20
9202	12	9207	22
9204	14	9208	24
9205	16		


Step Bits

Size	Dia (mm)
9301	21
9302	25
9303	29
9304	33


Chamfer Bits

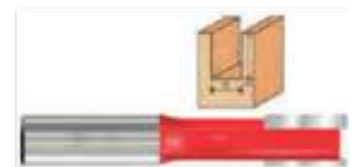
Size	Dia (mm)
9401	29
9402	37
9403	33
9404	38
9405	40
9406	48


**Straight Bits
(20MM)**

Size	Dia (mm)	Size	Dia (mm)
9501	4	9506	12.7
9502	6	9507	15
9503	8	9508	19
9504	10	9509	20
9505	12	9510	25


**Straight Bits
(38MM)**

Size	Dia (mm)
9503	8
9504	10
9505	12.7


**Straight Bits
(50MM)**

Size	Dia (mm)
9503	8
9504	10
9505	12.7

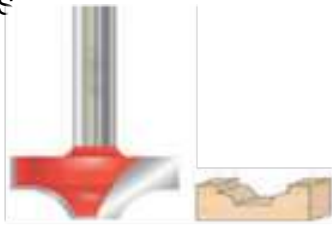

**Straight Bits
(75MM)**

Size	Dia (mm)
9503	8
9504	10
9505	12.7

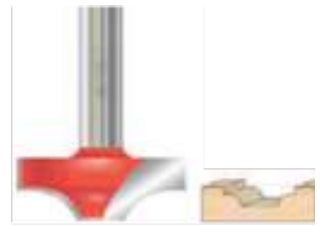


**Classical Plunge
CUT BEADING BITS**

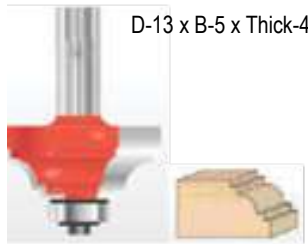
Size	Dia (mm)
9601	16
9602	10
9603	24
9604	16


**Plunge Cut
BEADING BITS**

Size	Dia (mm)
9701	6
9702	8
9703	10
9704	12

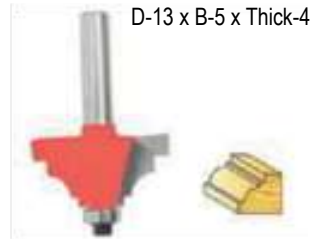

**Double Fillet
COVE BITS**

Size	Dia (mm)
9801	29
9802	37
9803	33
9804	38


BEARING SIZE :
D-13 x B-5 x Thick-4

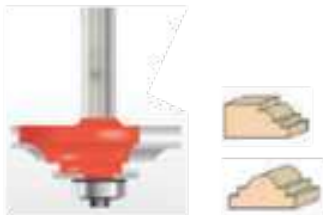
Bottom Ologo Bits

Size	Dia (mm)
9901	29
9902	37
9903	33
9904	38


BEARING SIZE :
D-13 x B-5 x Thick-4

Top Ologo Bits

Size	Dia (mm)
9911	29
9912	37
9913	33
9914	38


Double Ologo Bits

Size	Dia (mm)
9921	29
9922	37
9923	33
9924	27


BEARING SIZE :
D-13 x B-5 x Thick-4

**Center Ologo Bits
(THREAD BITS)**

Size	Dia (mm)	Size	Dia (mm)
9933	10	9937	18
9934	12	9938	20
9935	14	9939	24
9936	16	9940	30


**Center
(CARVING BITS)**

Model	Dia (mm)	Model	Dia (mm)
9943	10	9947	18
9944	12	9948	20
9945	14	9949	24
9946	16	9950	30

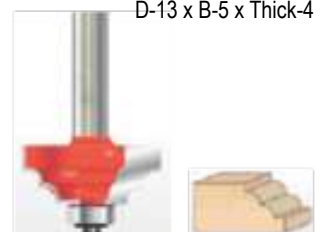

**Classic Roman Ogee
(CEBTER BITS)**

Size	Dia (mm)
9951	29
9952	37
9953	33
9954	38


BEARING SIZE :
D-13 x B-5 x Thick-4

Thumb Mould Bits

Size	Dia (mm)
9961	29
9962	37
9963	33
9964	38


BEARING SIZE :
D-13 x B-5 x Thick-4

Corner Round Bits

Size	Dia (mm)
TS-1	14
TS-2	15.5
TS-3	26


Trim Bits

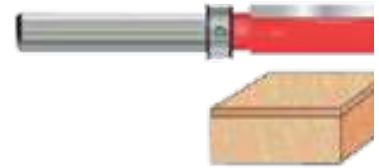
Size	Dia (mm)
TS-4	7
TS-5	9.5
TS-6	13


Straight Bits

Size	Dia (mm)
TS-10	6
TS-10	4
TS-11	10
TS-12	12


Trimmer
TOP BERING BITS

Size	Dia (mm)
TS-15	12.7


Router Bit


ROUTER BITS SIZES

Corner Bits	Chamfer Bits
8x38 (135)	8x38 (9401)
8x50x10 (140)	8x40 (9402)
8x50x12 (141)	8x48 (9403)
934	8x38 (9404)
Straight Bit With Bearing	8x40 (9405)
8x7 (5001)	8x48 (9406)
8x8 (5002)	Straight Bits
8x10 (5003)	8x4 (9501)
8x13 (5004)	8x6 (9502)
Ovolo Bits	8x8 (9503)
8x21 (9031)	8x10 (9504)
8x25 (9032)	8x12 (9505)
8x29 (9033)	8x12.7 (9506)
8x33 (9034)	8x15 (9507)
8x37 (9035)	8x19 (9508)
8x43 (9036)	8x20 (9509)
8x53 (9037)	8x25 (9510)
8x63 (9038)	
Cove Bead Bits	Step Ologo Bits
8x29 (9042)	8x29 (9801)
8x33 (9043)	8x33 (9803)
8x37 (9044)	8x38 (9804)
Ovolo-Cove Profil Bits	Bottom Ologo Bits
8x29 (9051)	8x29 (9901)
8x37 (9052)	8x37 (9902)
8x33 (9053)	8x33 (9903)
8x38 (9054)	8x38 (9904)

Cove-Ovolo Profile Bits	Top Ologo Bits
8x33 (9063)	8x29 (9911)
8x38 (9064)	8x37 (9912)
Ogee Fillet Bits	8x33 (9913)
8x37 (9072)	8x38 (9914)
8x33 (9073)	9936
Rabbeting (Slot Bits)	9937
8x35x4 (9091)	Classic Roman Ogee (Center Bits)
8x35x6 (9092)	8x29 (9951)
8x35x8 (9093)	8x37 (9952)
8x35x9 (9094)	8x33 (9953)
8x35x10 (9095)	8x38 (9954)
8x35x12 (9096)	Thumb Mould Bits
8x35x15 (9097)	8x29 (9961)
8x35x20 (9098)	8x37 (9962)
8x35x25 (9099)	8x33 (9963)
8x35x38 (9100)	8x38 (9964)
8x35x32 (9200)	12PCS Wooden Set 8mm
Step Bits	6 PCS Trimmer Bits Set
8x21 (9301)	12PCS PVC Router Bit Set
8x29 (9303)	12PCS Bearing Router Bit Set Hy
Long Bits	TRIMMER BITS
8X8X50 (5002L)	TS2
8X8X50 (5003L)	TS4
8X8X50 (5004L)	TS5
8X8X50 (9503L)	TS6
8X10X50 (9504L)	TS10
8X12X50 (9505L)	TS11
8X12.7X50 (9506L)	TS12



Router Bit Set



Set 12 Pcs **Wooden Box**



Set 12 Pcs **PVC Box**



Trimmer Bit Set



Set 6 Pcs **Trimmer Bit**

Trimmer Bit



TS 2, TS4, TS 5, TS 6, TS 10, TS 11, TS 12

ARMATURES
Professional Series


SIZES
BOSCH
DIVS PRO ARMATURE FOR 6-100
DIVS PRO ARMATURE FOR 750-100
DIVS PRO ARMATURE FOR 7-100
DIVS PRO ARMATURE FOR 8-100
DIVS PRO ARMATURE FOR 900-100
DIVS PRO ARMATURE FOR 2-18
DIVS PRO ARMATURE FOR 2-20
DIVS PRO ARMATURE FOR 2-22
DIVS PRO ARMATURE FOR 2-24 (5T)
DIVS PRO ARMATURE FOR 2-26
DIVS PRO ARMATURE FOR 2-28
DIVS PRO ARMATURE FOR 13RE
DIVS PRO ARMATURE FOR GHO-10-82
DIVS PRO ARMATURE FOR 14-125 CIE
DIVS PRO ARMATURE FOR GST 85 PB
DIVS PRO ARMATURE FOR GEX-150
DIVS PRO ARMATURE FOR GBM13-2
DIVS PRO ARMATURE FOR GSB1300
DIVS PRO ARMATURE FOR GDC34
DIVS PRO ARMATURE FOR GDC-120
DIVS PRO ARMATURE FOR GDC121
DIVS PRO ARMATURE FOR GKS-190
DIVS PRO ARMATURE FOR GKS-7000
DIVS PRO ARMATURE FOR GSH 388
DIVS PRO ARMATURE FOR 20-180
DIVS PRO ARMATURE FOR 11 VC
DIVS PRO ARMATURE FOR 11E
DIVS PRO ARMATURE FOR GCO200
DIVS PRO ARMATURE FOR GCO2000
DIVS PRO ARMATURE FOR 24-180
DIVS PRO ARMATURE FOR GCO2400J
DIVS PRO ARMATURE FOR 16-30
DIVS PRO ARMATURE FOR GBH7-46
DIVS PRO ARMATURE FOR 3220
KEN
DIVS PRO ARMATURE FOR KEN CM4
DIVS PRO ARMATURE FOR 7614 NB
DIVS PRO ARMATURE FOR 9913

SIZES
HITACHI
DIVS PRO ARMATURE FOR G-10SS
DIVS PRO ARMATURE FOR G10SS2
DIVS PRO ARMATURE FOR DV13VSS
DIVS PRO ARMATURE FOR PDA-100M
DIVS PRO ARMATURE FOR PDA-100D
DIVS PRO ARMATURE FOR C-7
DIVS PRO ARMATURE FOR C-7SS
DIVS PRO ARMATURE FOR DU-10
DIVS PRO ARMATURE FOR DH24PB3
DIVS PRO ARMATURE FOR 2510
DIVS PRO ARMATURE FOR CM4SA
DIVS PRO ARMATURE FOR CM4SB
DIVS PRO ARMATURE FOR CM5
DIVS PRO ARMATURE FOR G-15 SA2
DIVS PRO ARMATURE FOR CM6
DIVS PRO ARMATURE FOR G18SE2
DIVS PRO ARMATURE FOR CC-14SF
DIVS PRO ARMATURE FOR CC-14STA
DIVS PRO ARMATURE FOR CC-14STD
DIVS PRO ARMATURE FOR PH 65A
DIVS PRO ARMATURE FOR G18SH2
MAKITA
DIVS PRO ARMATURE FOR N1900B
DIVS PRO ARMATURE FOR 9035
DIVS PRO ARMATURE FOR MT410
DIVS PRO ARMATURE FOR 9553
DIVS PRO ARMATURE FOR 3703
DIVS PRO ARMATURE FOR 9558
DIVS PRO ARMATURE FOR MT90
DIVS PRO ARMATURE FOR 0810T
DIVS PRO ARMATURE FOR MT412
DIVS PRO ARMATURE FOR MT240
DIVS PRO ARMATURE FOR 4107R
DIVS PRO ARMATURE FOR 2414 NB
DIVS PRO ARMATURE FOR GA5010
DIVS PRO ARMATURE FOR GA7020
DIVS PRO ARMATURE FOR GA 7030
DIVS PRO ARMATURE FOR HM 1306
DIVS PRO ARMATURE FOR MT60
DIVS PRO ARMATURE FOR MT 580

SIZES
DIVS PRO ARMATURE FOR MT 811
DIVS PRO ARMATURE FOR MT900
DIVS PRO ARMATURE FOR MT 954
DIVS PRO ARMATURE FOR 2414 NB
DIVS PRO ARMATURE FOR 5016
DIVS PRO ARMATURE FOR 5806B
DIVS PRO ARMATURE FOR 1202C
DEWALT
DIVS PRO ARMATURE FOR DW28135
DIVS PRO ARMATURE FOR DWD024
DIVS PRO ARMATURE FOR DWD014
DIVS PRO ARMATURE FOR D25123
DIVS PRO ARMATURE FOR D25013K
DIVS PRO ARMATURE FOR 801
DIVS PRO ARMATURE FOR 6013BR
DIVS PRO ARMATURE FOR DW28491
DIVS PRO ARMATURE FOR DW871
DIVS PRO ARMATURE FOR DW28410
DIVS PRO ARMATURE FOR DW28413
DIVS PRO ARMATURE FOR DW28700
DIVS PRO ARMATURE FOR DW28710
DIVS PRO ARMATURE FOR DW28720
DIVS PRO ARMATURE FOR DW28730
DIVS PRO ARMATURE FOR DW25901
KPT
DIVS PRO ARMATURE FOR KPT-561
DIVS PRO ARMATURE FOR KPT-5502
DIVS PRO ARMATURE FOR KC355
DIVS PRO ARMATURE FOR KPT-5791
DIVS PRO ARMATURE FOR KPT-1290
SKILLS
DIVS PRO ARMATURE FOR 5300-SKILL
DIVS PRO ARMATURE FOR 9620-SKILL
DIVS PRO ARMATURE FOR 9817-SKILL
DIVS PRO ARMATURE FOR 9816-SKILL
DIVS PRO ARMATURE FOR 6510-SKILL

SIZES
OTHERS
DIVS PRO ARMATURE FOR 6.5 MM (DCA)
DIVS PRO ARMATURE FOR FF-160 (DCA)
DIVS PRO ARMATURE FOR FF-3-26 (DCA)
DIVS PRO ARMATURE FOR PH-65 SC (DCA)
DIVS PRO ARMATURE FOR FF-02-200 (DCA)
DIVS PRO ARMATURE FOR FF10A (DCA)
DIVS PRO ARMATURE FOR 90MM CORE DRILL (DCA)
DIVS PRO ARMATURE FOR SIS-FF-125B (DCA)
DIVS PRO ARMATURE FOR AEG6-100
DIVS PRO ARMATURE FOR KR504RE (BLACK & DECKER)
DIVS PRO ARMATURE FOR KR554RE (BLACK & DECKER)
DIVS PRO ARMATURE FOR HP1321 (HORSE POWER)
DIVS PRO ARMATURE FOR HP1321R (HORSE POWER)
DIVS PRO ARMATURE FOR EB-20
DIVS PRO ARMATURE FOR CTC 125 (CUMI)
DIVS PRO ARMATURE FOR CM5 WC/ MC (DIVS PRO)
DIVS PRO ARMATURE FOR 21KG DEMOLITION HAMMER
DIVS PRO ARMATURE FOR LG355 (LG)
DIVS PRO ARMATURE FOR ECM-355A (EASTMAN)



STATOR
Professional Series


SIZES
BOSCH
DIVS PRO STATOR FOR BOSCH 6-100
DIVS PRO STATOR FOR BOSCH 13RE
DIVS PRO STATOR FOR BOSCH 2-20
DIVS PRO STATOR FOR BOSCH 2-22
DIVS PRO STATOR FOR BOSCH 2-26
DIVS PRO STATOR FOR BOSCH 11E
DIVS PRO STATOR FOR BOSCH GCO-200
DIVS PRO STATOR FOR BOSCH GCO-2000
HITACHI
DIVS PRO STATOR FOR HITACHI PDA 100M
DIVS PRO STATOR FOR HITACHI CM4SA
DIVS PRO STATOR FOR HITACHI CM4SB
DIVS PRO STATOR FOR G-10SS

SIZES
DIVS PRO STATOR FOR HITACHI CM5
DIVS PRO STATOR FOR HITACHI CC-14 STD
DIVS PRO STATOR FOR HITACHI CC-14SF
DIVS PRO STATOR FOR HITACHI PH-65A
DIVS PRO STATOR FOR HITACHI PH-65SC
DIVS PRO STATOR FOR DU-10
DIVS PRO STATOR FOR PDA 100D
DIVS PRO STATOR FOR CC14 STA
DEWALT
DIVS PRO STATOR FOR DEWALT 801
DIVS PRO STATOR FOR DEWALT DW871
DIVS PRO STATOR FOR DEWALT 28710
DIVS PRO STATOR FOR DW28720

SIZES
MAKITA
DIVS PRO STATOR FOR MAKITA 0810
DIVS PRO STATOR FOR MAKITA 2414NB
DIVS PRO STATOR FOR 4107
DIVS PRO STATOR FOR 2414NB
OTHERS
DIVS PRO STATOR FOR FF-160
DIVS PRO STATOR FOR KEN 7614
DIVS PRO STATOR FOR FF 3-26
DIVS PRO STATOR FOR LG 355
DIVS PRO CM5 WC/MC STATOR
DIVS PRO STATOR FOR 21KG DEMOLITION

DIVS GOLD ARMATURE

Divs Gold Armature
6-100
801
2-20
2-26
EBC40
13RE
PD100M
PD100D
CM4SA
CM4SB
CM5 (NEW)
CM5 (OLD)
CM6
03-26
0810
4107

Divs Gold Armature
6.5MM
C7
9553
35-1
50-1
MT410
MT412
MT 90
FF-160
GBH388
4016
PH65A
G18SE2
G18SH2
LG355
355D

Divs Gold Armature
DW871
PH65SC
CC14SF
CC14STD
28700
28710
28720
28730
2510
S1S-FF-125B
26mm Hangbo (27 L)
Screw Driver
5016
7614NB
CTC125
3703

Divs Gold Armature
G10SS
G10SS2
G15SA2
KPT5791
11E
GCO2000
GCO200
CC14STA
DU10
Straight Gridner
Die grinder
Stand Vibrator (300a)
China Chain Saw 16"
China Chopsaw 7T
9523NB
Cm5 WC/MC

ARMATURES



STATOR



GEAR



CM-5



PH-65
(FINAL BIG GEAR)



PH-65 SMALL
(COUNT GEAR)



2310



DW-801



PD-100M



CM4SB



810



C-7



GEAR+SHAFT
2-26



CM4SA



G15SA2



DU-10 (2PC)



GEAR+SHAFT
2-20



DU 10 SMALL



355D



13RE



LG-355



FF10A



GDC-120



35-1 VIBRATOR
EV-01



6-100



CC14STD

SWITCH



355D



6510



(LG TYPE)
355C



13RE



DW-801



5016



2-20 L/R



10mm L/R New



SPEED CONTROL
11E GOVERNER



DW-801 LH



G10SS



SD-10C
SCREW DRIVER



810



GCO-200



PH-65



26MM
2-26



20MM
2-20



CM4SA



11E



125MM
G-15SA2



6-100



FF10A



SD LED
(SCREW DRIVER)



SD-10B
SCREW DRIVER

CARBON BRUSH

HEAD (GEAR BOX)


HOUSING (BODY)



ANGLE GRINDER
G-15SA2 125MM



MT410



1900-B
(PLANER)



ANGLE GRINDER
6-100 (COMPLETE SET)



ROTARY HAMMER
2-20



35-1 VIBRATOR
EV-01



MITER SAW



HAMMER 5KG
810 (MOTOR HOUSING)



DRILL MACHINE
2310



PLANNER
90MM



MARBLE CUTTER
CM4SA



ANGLE GRINDER
801 (COMPLETE SET)



CIRCULAR SAW
C-7 (PLASTIC)



ROTARY
HAMMER 2-26



F-20 (2510)
METAL



LG CUT OF
MACHINE 355 LG



9553



MARBLE CUTTER
CM4SB



AB WASHER

CM4 SA, CM4 SB, 801, 6-100, C-7/CM6



DRILL CHUCK

10mm, 13mm



VELCRO PAD 5"

M-10, M-14



DU-10 & PVC PAD



TILES & SUNMICA CUTTER



PVC FLANGE

6-100, 7-100, 750-100, 8-115,
9-100, G10SS, G10SS2



SHAFT

35mm, 50mm

1m, 1.5 m, 2m, 3m, 4m, 6m

GUIDE BAR

16" 18" 22"

Div's^{RC} Pro TITANIUM



GUIDE BAR

16" 18" 22"

Div's^{Gold}



CHAIN (FULL CHISEL)

16" 18" 22"

Div's^{RC} Pro



02-20



HOLDER



NEEDLE BEARING BIG 3-12



NEEDLE BEARING SMALL HK0608



TAPPER BEARING



NEEDLE BEARING BIG + COVER



Knob



OIL SEAL



ALUMINIUM FLG SET



MOUTH KIT



GEAR SMALL



DUMPING SET



BODY



HEAD WITH ACCESSORIES



HEAD COMPLETE (FITED)



PISTON



STRIKER WITH ORING



TOOL HOLDER SET



THRUST BEARING



FRONT HANDLE



PISTOP WASHER

02-26



TOOL HOLDER SMALL (SET)



BODY



U CLAMP



CLIP + BEARING



PLASTIC GUTKA



HEAD COMPLETE



HEAD + NEEDLE



MOUTH KIT



TOOL HOLDER SET



PISTON



OIL SEAL



NEEDLE BEARING 0709



STRIKER WITH O RING



BEARING RETAINER



ALUMINIUM FLENGE



HOLDER SET COMPLETE



TOOTH SHAFT ASSEMBLY



SPRING



DUMPING SET



TAPPER + HK 0908 + K15



BEARING FOR CLAMP 699



SWING ASSEMBLY



NEEDLE BEARING



Knob

0810



ALL SPARES 2-20, 2-26, 0810, 11E, PH-65, 7KG, 12KG, 21 KG



PH65

 METAL RING
BIG SIZE

 METAL RING
ROUND

 BATTI
7 MM MTR.

 OIL
GAUGE

 OIL GLASS +
OIL PLATE


PISTON


 GLASS
CYLINDER


UPPER PLATE


 COVER SEAL
BLACK

 FRONT
LOCK SET


HEAD BLACK


 COVER SEAL
PAPER


HOLDER + CAP


 CONNECTING ROD
+ BEARING

 FRONT BODY
NECK

 CRANK
SHAFT


BACK JALI


 BODY
(HEAVY)


BRUSH CAP



PLASTIC HANDLE


 ALUMINIUM
HANDLE


FRONT HANDLE



INNER PLATE

11E

 BODY COVER
BACK

 COPPER
HOLDER


PLASTIC ROD



CLAMP



MECHANISM


 CONNECTING ROD
PVC


PISTON PVC


 RUBBLE
IMPACTOR
BLACK

 NEEDLE ROLLER
ASSEMBLY


SHIFT PLATE


 CONTROL DISC
SET

 HAMMER
PIPE


SPRING



TOOL HOLDER



RETAINING RING


 NAMDA
FOR MECHANISM

 PISTON
ALUMINIUM


Stricker PIN


 STOPPING
DEVICE

 FRONT
HANDLE


PIN


 CONNECTING ROD
ALUMINIUM +
BEARING

 KAJU NUT
THREADING RING


BODY



IMPACTOR

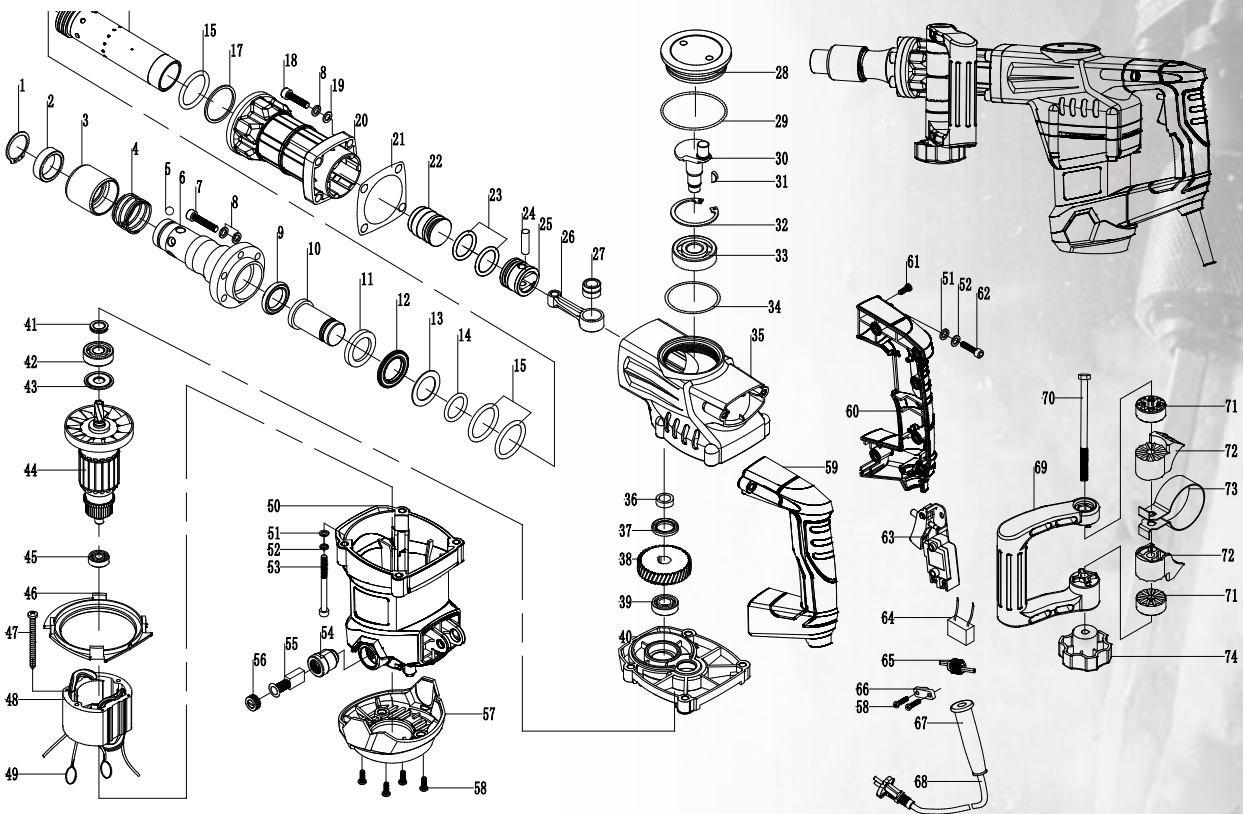

 FRONT KIT SET
11 PIECES

 BRUSH HOLDER
SET

 SWITCH
HANDLE

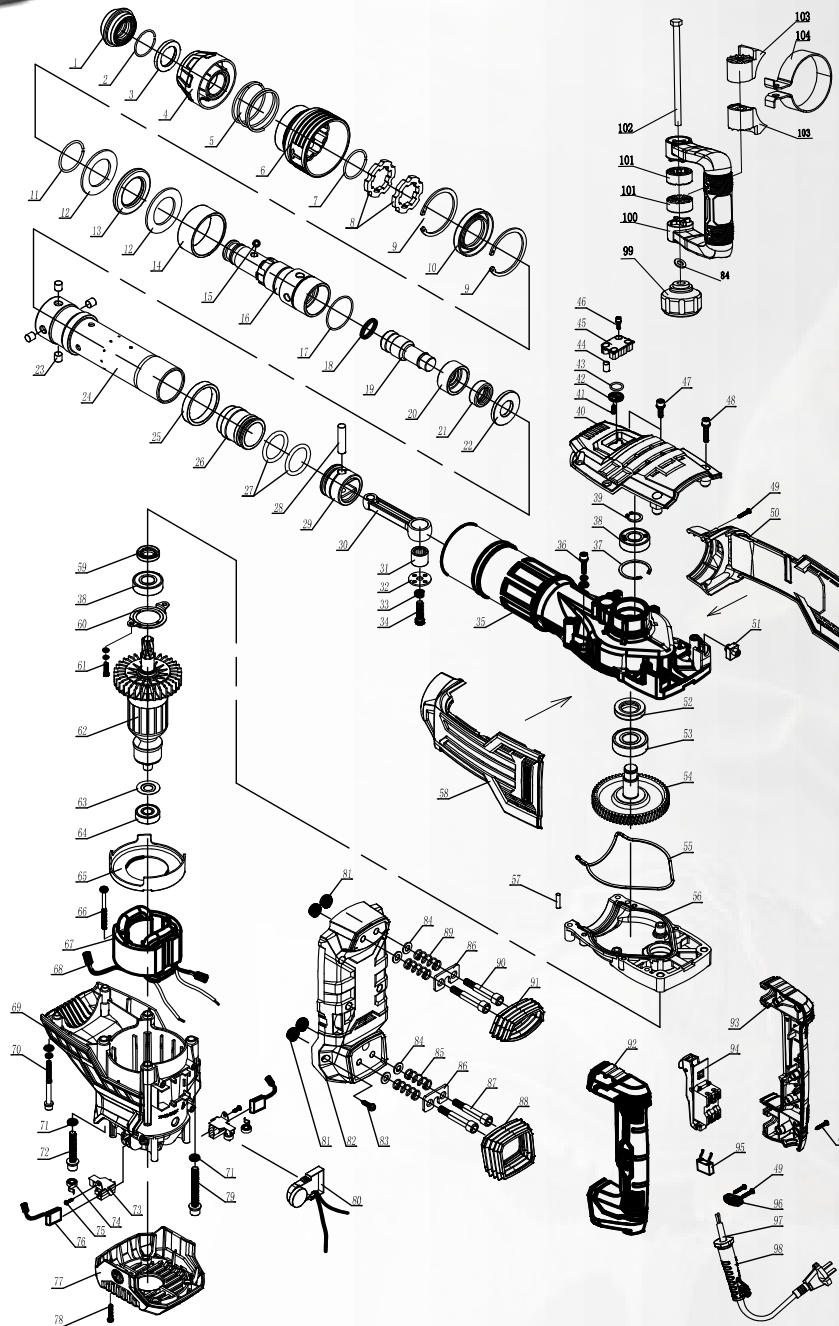
DEMOLITION Hammer

7KG



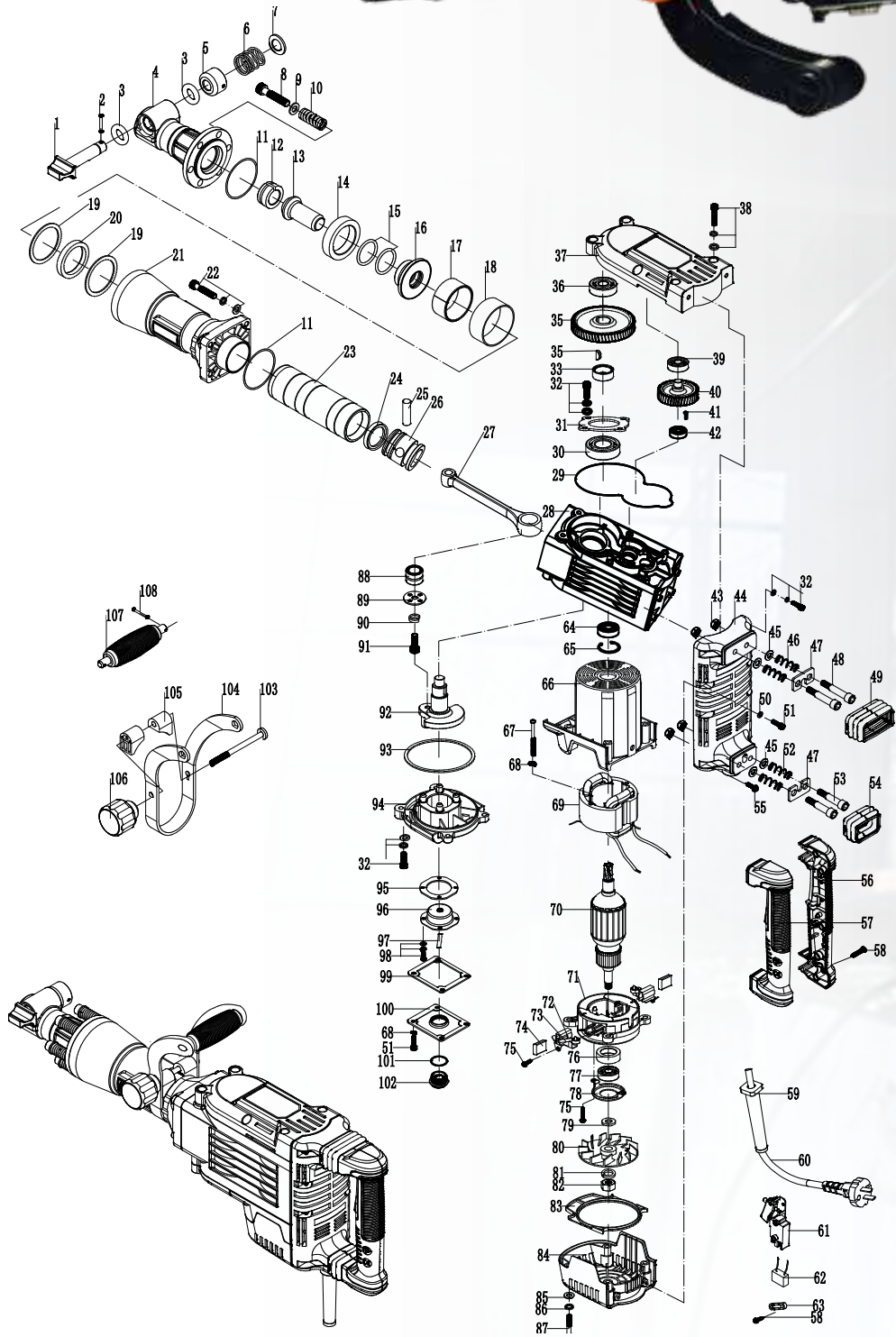
DEMOLITION Hammer

12KG



DEMOLITION Hammer

21KG



DC WHEEL

108507



(4x6, 5x6, 7x6) (For Ceramics)



UK 4X1 (1-NETT) (2-NETT)

AVAILABLE COLORS: ● ● ● ●

UK 5X1.2 (1-NETT) (2-NETT)

AVAILABLE COLORS: ● ● ● ●

UK 7X1.6 (1-NETT) (2-NETT)

AVAILABLE COLORS: ● ● ● ●

UK 10X2.0 (1-NETT) (2-NETT)

AVAILABLE COLORS: ● ● ● ●

UK 12X2 (1-NETT) (2-NETT)

AVAILABLE COLORS: ● ● ● ●

UK 14X2.5 (1-NETT) (2-NETT)

AVAILABLE COLORS: ● ● ● ●

UK 4X6, 5X6, 7X6

AVAILABLE COLORS: ● ● ● ●



Div's^{RC} Pro



OUR BRANDS:



e-catalogue

www.divspowertools.in